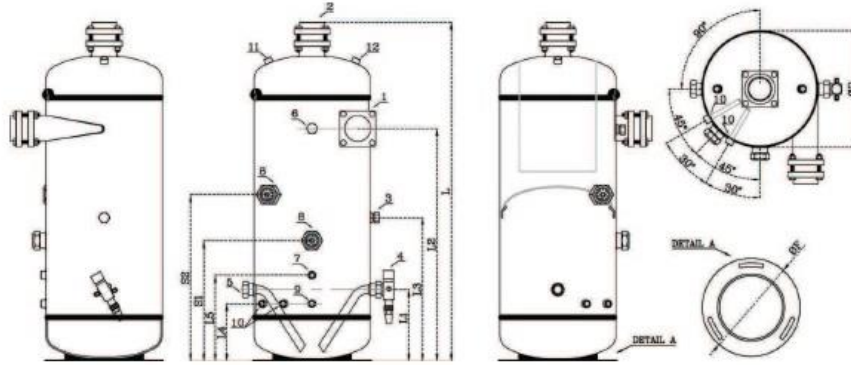


OIL SEPARATORS FOR SCREW COMPRESSORS



Model		OS/D-180x2	OS/D-100x2	OS/D-900x2	OS/D-1300x2	
COMPRESSOR SUCTION VOLUME						
Air Conditioning	m ³ /h	270	490	940	1320	
Cooling and Low Temperature	m ³ /h	300	600	1320	1600	
NOMINAL DATA						
Total Volume / Toplam Hacim	dm ³	40	120	220	330	
Oil Volume / Yağ Hacmi	dm ³	19	50	90	130	
Max. Compressor / Max. Kompresör	N.	2	3	6	6	
DIMENSIONS						
Ø D	mm	Ø 324	Ø 406	Ø 500	Ø 600	
L	mm	835	1180	1620	2020	
L1	mm	210	250	320	320	
L2	mm	550	810	1170	1470	
L3	mm	390	500	620	650	
L4	mm	170	200	220	220	
L5	mm	230	300	340	340	
S1	mm	300	420	500	560	
S2	mm	400	580	750	920	
Ø F	mm	VFC-320	VFC-415	VFC-550	VFC-650	
CONNECTIONS						
1	Refrigeration Inlet Connection	L	ODS 54	OD 76	OD 92	OD 114
2	Refrigeration outlet Connection	L2	ODS 54	OD 76	OD 92	OD 114
3	Oil Inlet Connection	L3	7/8" Rot, Valve			
4	Oil Outlet Connection	L1	7/8" Rot, Valve	1 3/8" Rot, Valve	1 5/8" Rot, Valve	2 1/8" Rot, Valve
5	Parallel Compressor Oil Outlet Connection	L3	1 1/4" R1k & Plug	1 3/4" R1k & Plug	2 1/4" R1k & Plug	2 1/4" R1k & Plug
6	Service Valve Conn.	L2	1 1/4" 12 UNF & Plug			
7	Oil Level Sensor Conn.	L5	M20x1,5 (For LLS-01)			
8	Sight Glasses	S1 / S2	SG-1 3/4"	SG-2 1/4"	SG-DN80	SG-DN80
9	Oil Heaters	L4	2x 1/2"NPTF & Plug	2x 1/2"NPTF & Plug	3x 1/2"NPTF & Plug	4x 1/2"NPTF & Plug
10	Thermostat	L4	1/2"NPTF & Plug			
11	Service Valve Conn.	-	3/8" NPT Connection & Plug			
12	Safety Valve Conn.	-	1/2" NPT Connection & Plug			
CERTIFICATES						
CATEGORY		97/23/EC	[B + C1] III	[B + D] IV	[B + D] IV	[B + D] IV
Refrigerant Type = HFC, HCFC, NH3						
TECHNICAL DATA						
Working Pressure (PS)	:	33 Bar				
Test Pressure (PT)	:	48 Bar				
Allowable Temperature (TS)	:	Min. -10°C /Max.-130°C				
Color (RAL)	:	5009				
General Tolerans (mm)	:	±5				