

# LIQUID RECEIVERS



The following list includes standard products only.

Upon special request, these standard products can be modified according to the Directive 97/23/EC.

- Sight glass may be reduced or increased according to the requirement.
- Sight glasses may be produced in various dimensions according to the requirement.
- Inlet & Outlet connections can be used in various dimensions and features according to the requirement.

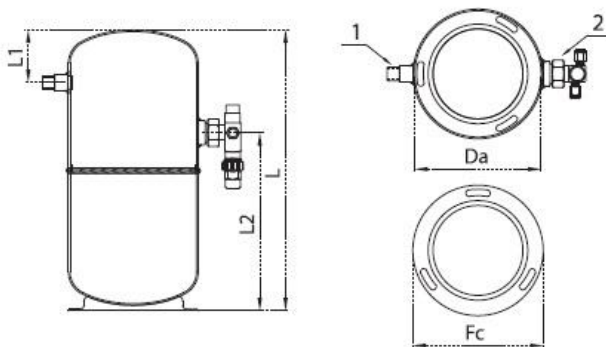
• Liquid level sensor connections can be used according to the requirement, 1/2" NPT connection is used as standard. However, LLS-01 model that is supplied by us uses M20x1.5 coupling sleeves.

Please see the page 45 for further information about the product.

- Different coupling sleeves may be used according to the safety valve that you will use and its connection,

- Products in different volume and design may be produced upon request.

Please contact us for further detail.



- 1 Outlet Connection
- 2 Inlet Connection

Vertical Liquid Receivers ( Deep Drawn )

Model	Volume (Lt)	Dimensions					Connections			CE 97/23/EC 32 Bar
		Da (mm)	L (mm)	L1 (mm)	L2 (mm)	Fc (mm)	Inside Solder	Outside Rotolock Connection	Outside Rotolock Valve	
VLR-01	1	∅ 89	200	45	140	∅ 135 (VFC-135)	1/4" ODS	1" Rot.	1/4" ODS	SEP
VLR-02	2	∅ 120	210	50	150		3/8" ODS	1" Rot.	3/8" ODS	
VLR-03	3	∅ 140	228	55	185	∅ 161 (VFC-161)	1/2" ODS	1" Rot.	1/2" ODS	CAT I A1
VLR-04	4	∅ 160	298	60	185					
VLR-05	5	∅ 160	297	65	220	∅ 182 (VFC-182)	5/8" ODS	1" Rot.	5/8" ODS	CAT II A1
VLR-06	6	∅ 180	347	80	220					
VLR-08	8	∅ 180	380	80	240	5/8" ODS	1" Rot.	5/8" ODS	CAT II A1	
VLR-09	9	∅ 180	410	80	255					
VLR-10	10	∅ 180	460	80	270	3/4" ODS	1" Rot.	5/8" ODS	CAT II A1	
VLR-12	12	∅ 219	360	80	220					
VLR-14	14	∅ 219	410	80	250	3/4" ODS	1" Rot.	5/8" ODS	CAT II A1	
VLR-16	16	∅ 219	480	80	290					
VLR-18	18	∅ 219	540	80	210	3/4" ODS	1" Rot.	5/8" ODS	CAT II A1	
VLR-21	21	∅ 219	610	80	210					